

# GARBAGE

PLACE THESE ITEMS IN YOUR GARBAGE CONTAINER:



Household garbage



Plastic bags, utensils, film plastics



Coated paper & cartons



Chip bags & candy wrappers



Styrofoam™



Compostable plastic



Cords, chains, clothes hangers



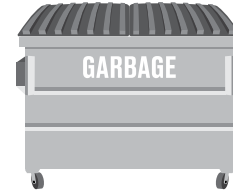
Clothing, shoes, blankets



Pet waste



Diapers



**DO NOT PUT BULKY ITEMS (MATTRESSES, FURNITURE, ETC.) INSIDE OR OUTSIDE OF COLLECTION CONTAINERS.**

**CONTACT MANAGEMENT FOR BULKY ITEM DISPOSAL OPTIONS.**

## ITEMS NOT ACCEPTED



⊘ No organics



⊘ No recyclables



⊘ No liquids



⊘ No e-waste



⊘ No furniture



⊘ No hot ashes, coals, fireworks



⊘ No hazardous waste