

ORGANICS



**KEEP ORGANICS OUT
OF LANDFILLS.**

WHAT TO PUT IN YOUR ORGANICS CONTAINER:



Food scraps



Fruits & vegetables



Cheese & eggshells



**Meat scraps
& bones**



**Coffee grounds,
paper filters, tea bags**



Food-soiled paper



Plant Trimmings

ITEMS NOT ACCEPTED



⊘ No glass



⊘ No metal



⊘ No liquids



⊘ No plastics



⊘ No coated paper or cartons



⊘ No treated, painted, stained, oiled wood



⊘ No pet waste

RECYCLING

PLEASE RECYCLE MORE OF THESE ITEMS:



Clean flattened cardboard & paperboard



Glass bottles & jars



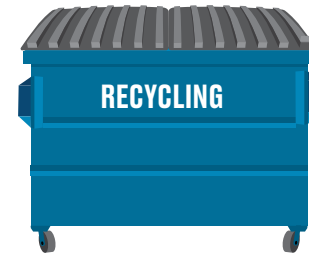
Clean paper



Plastic bottles & containers



Metal cans



**RECYCLABLES MUST BE
EMPTY AND DRY.
LIDS AND LABELS OK.
PLACE LOOSE IN CART –
DO NOT BAG.**

ITEMS NOT ACCEPTED



❌ No plastic bags or
plastic wrap, Styrofoam™



❌ No propane tanks, paint,
batteries, needles



❌ No hoses, cords,
chains, clothes hangers



❌ No coated paper
or cartons



❌ No clothing, shoes,
blankets



❌ No organics



❌ No liquids

GARBAGE

PLACE THESE ITEMS IN YOUR GARBAGE CONTAINER:



Household garbage



Plastic bags, utensils, film plastics



Coated paper & cartons



Chip bags & candy wrappers



Styrofoam™



Compostable plastic



Hoses, cords, chains, clothes hangers



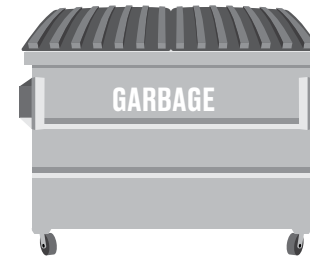
Clothing, shoes, blankets



Pet waste



Diapers



DO NOT PUT BULKY ITEMS (MATTRESSES, FURNITURE, ETC.) INSIDE OR OUTSIDE OF COLLECTION CONTAINERS.

CONTACT MANAGEMENT FOR BULKY ITEM DISPOSAL OPTIONS.

ITEMS NOT ACCEPTED



❌ No organics



❌ No recyclables



❌ No liquids



❌ No e-waste



❌ No rocks, dirt, bricks, sod



❌ No hot ashes, coals, fireworks



❌ No hazardous waste

ORGANICS

KEEP ORGANICS OUT OF LANDFILLS.

WHAT TO PUT IN YOUR ORGANICS CONTAINER



ITEMS NOT ACCEPTED



RECYCLING

RECYCLABLES MUST BE EMPTY AND DRY.
LIDS AND LABELS OK.
PLACE LOOSE IN CART – DO NOT BAG.

PLEASE RECYCLE MORE OF THESE ITEMS:



ITEMS NOT ACCEPTED



GARBAGE

PLACE THESE ITEMS IN YOUR GARBAGE CONTAINER:



ITEMS NOT ACCEPTED

